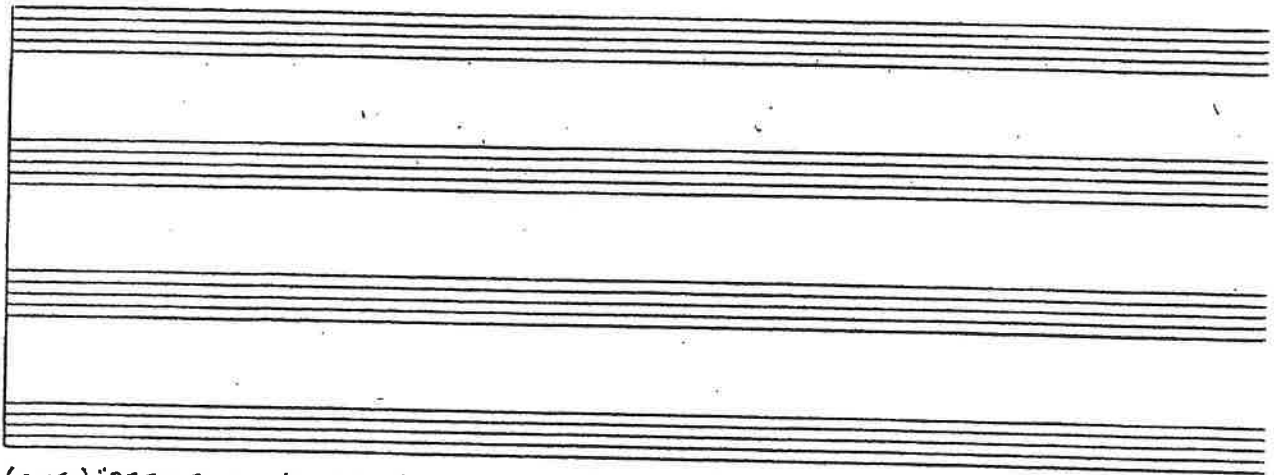


CONDUCTOR

MAKE 'EM LAUGH

SINGIN' IN THE RAIN
(TRANSPOSED "F") 8/3/86



Begin *

(CUE:) "BEFORE WE WAS LED TO GUILLOTINE"

A COSMO: 1

1 (2) (3) (4)

Tutti MAKE 'EM LAUGH MAKE 'EM LAUGH. DON'T YA

W.W.

sfz

(VNS, VLA.)

C13 sfz

mf F6 FMA9 F6 FMA9 F6

(+BASS)

5 (6) (7) (8)

KNOW EV-'RY - ONE WANTS TO LAUGH. MY

W.W. BE CLOCK

f

F6 FMA9 F6 FMA9 F6

12-4CR

P 2580-802-86

"Make 'Em Laugh" © 1951, Renewed 1979 Metro-Goldwyn-Mayer, Inc. Rights assigned to CBS Catalogue Partnership. All rights contr. and administered by CBS Robbins Catalog Inc.

"MAKE 'EM LAUGH"
(TRANSP. (F) 8/3/86

COND.

9 (10) (11) (12) (13) (14)

DAD SAID "BE AN AC-TOR, MY SON; BUT BE A

STRS

W.W. BR. (12)

OB. (13)

Gmi⁷ Gmi⁷SUS C⁹ C⁷ Gm⁹ C¹³ F⁶ Fm⁷ Dm⁷ D⁷+

15 3 (16) (17) (18) (19) (20)

COM- I- CAL ONE! THEY'LL BE STAND IN IN LINE FOR THOSE

TUGGI (16)

BR. (W. W. + BR.) (17)

STRS. (17)

G⁹ C⁹ C⁹+ VLA. CELLO (17) F⁹ F⁶ F⁹ Fm⁷ F⁶

21 (22) (23) (24)

W.W. BR. OLD HON - KY - TONK MON - KEY SHINES! NOW

VLA. CELLO (21)

F⁹ F⁷ B^b6

COND.

-3-

"MAKE 'EM LAUGH" (TRANSP. F) 8/3/86

25 (26) (27) (28)

YOU COULD STU-DY SHAKES-PEARE AND BE QUITE E-LITE. AND

WV BR

Bb6 B° F6/C FMA7° F9 F7°

STRS

(29) (30) (31) (32)

YOU COULD CHARM THE CRI-TICS AND HAVE NOTH-IN' TO EAT. JUST

Bb6 B° F6/C FMA7° F9 F7°

(33) (34) (35) (36)

SLIP ON A BA-NA-NA PEEL THE WORLD'S AT YOUR FEET! MAKE 'EM

Bb6 B° G° D9 STRS

COND.

4- MAKE 'EM LAUGH

(TRANS. F) 8/3/86

37) LAUGH MAKE 'EM LAUGH MAKE 'EM LAUGH! MAKE... *end

38) 39) 40)

VLA CELLO

G9 G7(b9) C13 C9 F6 (SLIDE WHISTLE) C7+

41) MAKE 'EM LAUGH. DON'T YA

42) 43) 44)

VLA CELLO

mf F6 FMA9 F6 FMA9 F6

45) KNOW EV - 'RY - ONE WANTS TO LAUGH. MY

46) 47) 48)

VLA CELLO

F6 FMA9 F6 FMA9 F6

Gloef U.W. BR.